



Manoharabhai Shikshan Prasarak Mandal Armori's

**MAHATMA GANDHI ARTS, SCIENCE &
LATE NASARUDDINBHAII PANJWANI COMMERCE
COLLEGE ARMORI**

Dist. Gadchiroli (Maharashtra) 441 208

Affiliated to Gondwana University, Gadchiroli.

Re-accredited by NAAC 'A' with 3.24 CGPA

**ANNUAL QUALITY ASSURANCE REPORT
(AQAR) 2022-23**

**CRITERION – VII
INSTITUTIONAL VALUES &
BEST PRACTICES**

METRIC NO: ~ 7.1.2.

METRIC NAME: ~ *The Institution has facilities for alternate sources of energy and energy conservation measures*



Web: - mgcollegearmori.ac.in
e-mail: - mgcollege.armori@gmail.com
Phone: - 07137-266558



MANOHARBAI SHIKSHAN PRASARAK MANDAL ARMORI'S
MAHATMA GANDHI ARTS, SCIENCE &
LATE NASARUDDINBHAI PANJWANI COMMERCE COLLEGE



ARMORI Dist. Gadchiroli (M.S.) 441 208
Affiliated to Gondwana University, Gadchiroli
Re-accredited by NAAC 'A' with 3.24 CGPA(2022)
Web: mgcollegearmori.ac.in

Dr. Lalsingh H. Khalsa
Principal & IQAC Chairman
Mob. No. 9422153197
E-mail: lalsinghkhalsa@yahoo.com

Dr. Satish. S. Kola
IQAC Coordinator
Mob. 9595982057
E-mail: satish.kolawar@gmail.com

Certificate of Verification

The document herewith is a testimonial of the following specifics;


- AQAR 2022-23
- Criterion - VII (Institutional Values & Best Practices)
- Metric no. – 7.1.2
- Metric Particular - Facilities for alternate source of energy and energy conservation measures.

It is affirmed that the attached document pertinent to the above cited specifics are duly verified and approved by the IQAC.


Criterion Head


IQAC Coordinator

IQAC-Co-ordinator


IQAC Chairperson
PRINCIPAL
M.G. Arts, Science &
Late N.P. Commerce College
ARMORI, Dist. Gadchiroli



CRITERION – VII
INSTITUTION VALUES & BEST PRACTICES

METRIC NO.	7.1.2
METRIC NAME	<i>Facilities for alternate source of energy and energy conservation measures</i>

.7.1.2 The Institution has facilities for alternate sources of energy and energy conservation measures

1. **Solar energy** -The College is aware about the renewable source of energy and by understanding we have installed the Grid solar PV rooftop power plant from August 2017 to generate, conserve and save the electricity & it is connected to the power grid of Maharashtra State Electricity Distribution Company Limited (MSEDCL).

Solar Energy Power generation through renewable energy sources is the need of the hour as we cannot be only dependent on the conventional energy sources to meet our needs. This power is utilized by us, in, office, college premises. The excess electricity generated is provided to the grid.

2. **Biogas plant:-** We don't have the biogas plant.

3. **Wheeling to the Grid:** - conserve and save the electricity & it is connected to the power grid of Maharashtra State Electricity Distribution Company Limited (MSEDCL).

4. **Sensor-based energy conservation:** - New age projector and desktops are installed and they shut down automatically when time exceeds.

5. **Use of LED bulbs/ power efficient equipment:-** The college has taken care to install the LED lights and projectors in newly constructed labs, classrooms and seminar hall and tried to replace the existing fluorescent lights with LED bulbs, one for saving the energy in the entire campus. In Computer lab and in office all desktops are with LCD screen.

CONTENT

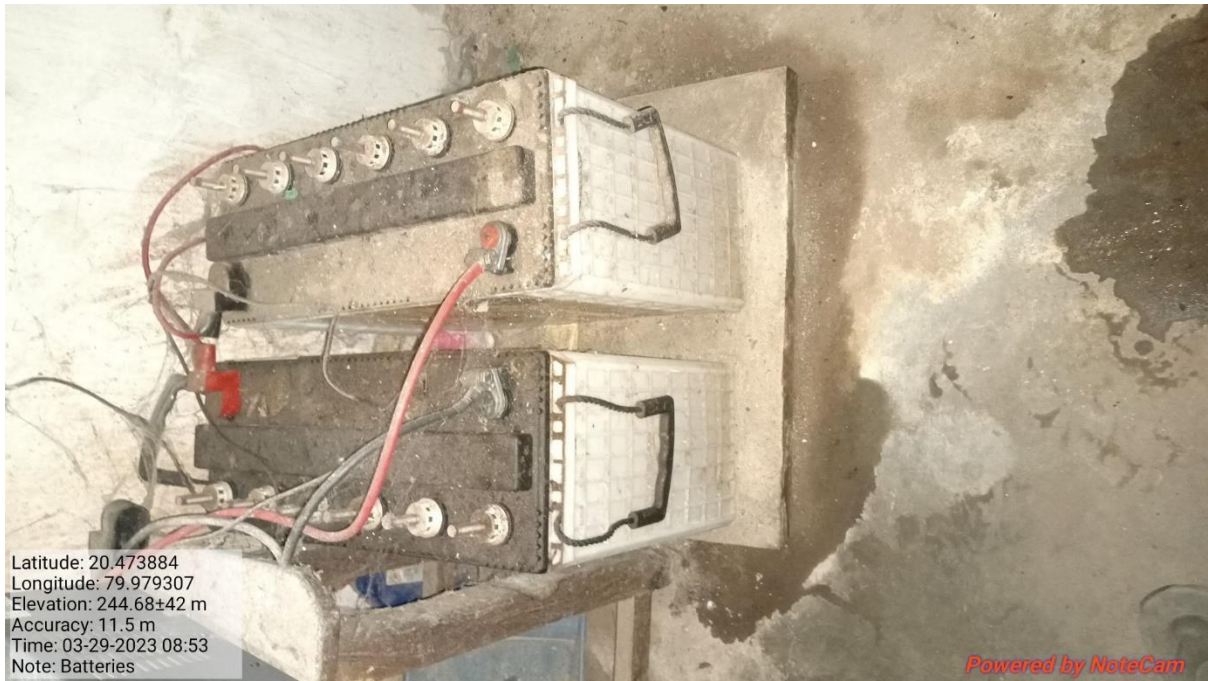
Solar Energy and Energy Conservation

Sr. No.	Evidence Particulars	Page No.
1	Installed Solar Panel	1
2	Invertor Batteries Working on Solar Energy	2
3	Wheeling to grid	3
4	Use of LED Bulbs	4
5	LED Monitors in Computer Lab and Office	5

7.1.2. The Institution has facilities for alternate sources of energy and energy conservation measures



Installed Solar Pannel



Latitude: 20.473884
Longitude: 79.979307
Elevation: 244.68±42 m
Accuracy: 11.5 m
Time: 03-29-2023 08:53
Note: Batteries

Powered by NoteCam



Latitude: 20.473885
Longitude: 79.979311
Elevation: 244.68±42 m
Accuracy: 12.6 m
Time: 03-29-2023 08:53
Note: Batteries

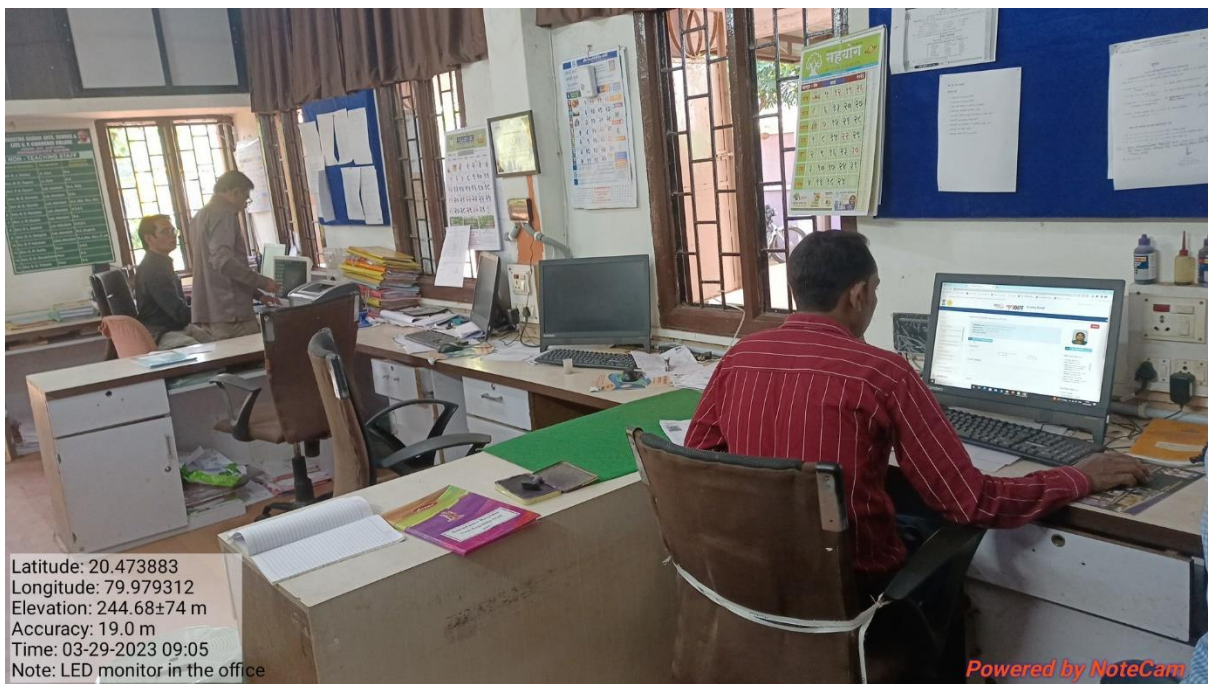
Invertor Working on Solar Energy



Wheeling to grid



Use of LED Bulbs



LED Monitors in Computer Lab and Office